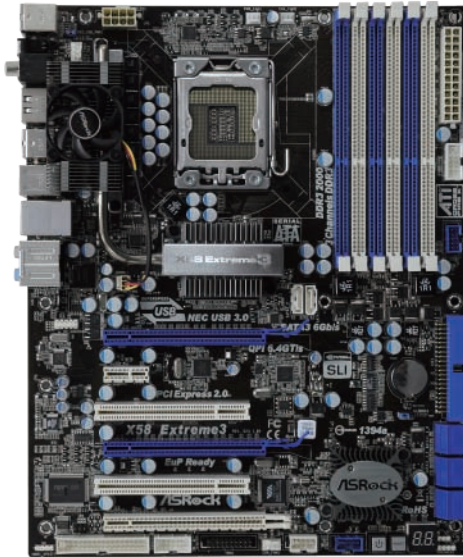


X58 Extreme3

Intel® X58+ ICH10R Chipsets

ASRock
www.asrock.com



Detail Specification

Platform	- ATX Form Factor: 12.0-in x 9.6-in, 30.5 cm x 24.4 cm - All Solid Capacitor design (100% Japan-made high-quality Conductive Polymer Capacitors)
CPU	- Intel® Socket 1366 Core™ i7 Processor Extreme Edition / Core™ i7 Processor Supports Intel® Dynamic Speed Technology - System Bus up to 6400 MT/s; Intel® QuickPath Interconnect - Advanced V8 Power Phase Design - Supports Hyper-Threading Technology - Supports Untied Overclocking Technology - Supports EM64T CPU
Chipset	- Northbridge: Intel® X58 - Southbridge: Intel® ICH10R
Memory	- Dual Channel DDR3 memory technology - 6 x DDR3 DIMM slots - Supports DDR3 2000(OC)/1866(OC)/1600(OC)/1333(OC)/1066 non-ECC, un-buffered memory - Supports DDR3 ECC, un-buffered memory with Intel® Workstation "S Xeon" processors 5600 series - Max. capacity of system memory: 24GB - Supports Intel® Extreme Memory Profile (XMP)
Expansion Slot	- 2 x PCI Express 2.0 x16 slots (blue @ x16 mode) - 1 x PCI Express x16 slot (white @ x4 mode) (Double-wide slot spacing between each PCI-E slot) - 1 x PCI Express x1 slot - 2 x PCI slots - Supports ATI™ CrossFireX™ and Quad CrossFireX™ - Supports NVIDIA™ SLI™ and Quad SLI™
Audio	- 7.1 CH HD Audio with Content Protection - DAC with 110dB dynamic range (VIA® VT2020 Audio Codec) - Premium Blu-ray audio support
LAN	- PCIE x1 Gigabit LAN 10/100/1000 Mb/s - Realtek RTL8111DL - Supports Wake-On-LAN
Rear Panel I/O	- I/O Panel - 1 x PS/2 Mouse Port - 1 x PS/2 Keyboard Port - 1 x Coaxial SPDIF Out Port - 1 x Optical SPDIF Out Port - 5 x Ready-to-Use USB 2.0 Ports - 1 x Powered eSATA/USB 2.0 Connector - 2 x Ready-to-Use USB 3.0 Ports - 1 x RJ-45 LAN Port with LED (ACT/LINK LED and SPEED LED) - 1 x IEEE 1394 Port - 1 x Clear CMOS Switch with LED - HD Audio Jack: Side Speaker / Rear Speaker / Central / Bass / Line in / Front Speaker / Microphone
SATA3	- 2 x SATA3 6.0 Gb/s connectors by Marvell SE9128, support hardware RAID (RAID 0 and RAID 1), NCQ, AHCI and "Hot Plug" functions (SATA3_2 connector is shared with eSATA3 port)
USB 3.0	- 2 x USB 3.0 ports by NEC MPD720200, support USB 1.0/2.0/3.0 up to 5Gb/s
Connector	- 6 x SATAII 3.0 Gb/s connectors, support RAID (RAID 0, RAID 1, RAID 10, RAID 5 and Intel® Matrix Storage), NCQ, AHCI and Hot Plug functions - 2 x SATA3 6.0 Gb/s connectors - 1 x ATA133 IDE connector (supports 2 x IDE devices) - 1 x Floppy connector - 1 x IR header - 1 x COM port header - 1 x HDMI_SPDIF header - 1 x IEEE 1394 header - 1 x TPM header - 1 x Chassis Intrusion header - 1 x Power LED header - CPU/Chassis/NB/Power FAN connector - 24 pin ATX power connector - 8 pin 12V power connector - CD in header - Front panel audio connector - 2 x USB 2.0 headers (support 4 USB 2.0 ports) - 1 x Dr. Debug (7-Segment Debug LED)
Smart Switch	- 1 x Power Switch with LED - 1 x Reset Switch with LED - 1 x Clear CMOS Switch with LED
BIOS Feature	- 8Mb AMI Legal BIOS - Supports "Plug and Play" - ACPI 1.1 Compliance Wake Up Events - Supports jumperfree - SMBIOS 2.3.1 Support - CPU_VCCM, IOH, ICH, VTT, IOH/ICH PCIE, CPU PLL, IOH CSI, VCCORE Voltage Multi-adjustment - Supports I. O. T. (Intelligent Overclocking Technology)
Support CD	- Drivers, Utilities, Antivirus Software (Trial Version), ASRock Software Suite (CyberLink DVD Suite - OEM and Trial; Creative Sound Blaster X-Fi MB - Trial)
Unique Feature	- ASRock OC Tuner - Intelligent Energy Saver - Instant Boot - ASRock Instant Flash - ASRock OC DNA - Hybrid Booster: - CPU Frequency Stepless Control - ASRock U-COP - Boot Failure Guard (B.F.G.) - Good Night LED
Hardware Monitor	- CPU Temperature Sensing - Chassis Temperature Sensing - CPU/Chassis/NB/Power Fan Tachometer - CPU Quiet Fan - CPU/Chassis Fan Multi-Speed Control - CASE OPEN detection - Voltage Monitoring: +12V, +5V, +3.3V, CPU Vcore
OS	- Microsoft® Windows® 7 / 7 64-bit / Vista™ / Vista™ 64-bit / XP / XP 64-bit compliant
Certifications	- FCC, CE, WHQL - ErP/EuP Ready (ErP/EuP ready power supply is required)
Accessories	- 1 x ASRock SLI_Bridge_2S Card - Quick Installation Guide, Support CD, I/O Shield - Floppy/ATA 133 Cables - 4 x SATA Data Cables (Optional) - 2 x SATA 1 to 1 Power Cables (Optional)

Product Brief

- Supports the Core i7 980X 6-Core CPU
- ASRock DuraCap (2.5 x longer life time), 100% Japan-made high-quality Conductive Polymer Capacitors
- Advanced V8 Power Phase Design
- Supports Triple Channel DDR3 2000 (OC)
- Supports ATI™ CrossFireX™ and Quad CrossFireX™
- Supports NVIDIA® Quad SLI™ and SLI™
- 1 x Powered eSATA/USB Connector, 2 x SATA3 6.0 Gb/s connector, 2 x USB 3.0 Ports
- ErP/EuP Ready, Dr. Debug
- Smart Switch Design : Power / Reset / Clear CMOS Switch with LED
- Supports ASRock Instant Boot, Instant Flash, OC DNA, Multi-Speed Fan Control, OC Tuner, IES, Good Night LED
- 7.1 CH HD Audio (VT2020 Audio Codec with QSound), SRN 110dB & Premium Blu-ray audio support
- Free Bundle: CyberLink DVD Suite - OEM and Trial; Creative Sound Blaster X-Fi MB - Trial

The specification is subject to change without notice. The brand and product names are trademarks of their respective companies. Any configuration other than original product specification is not guaranteed.

X58 Extreme3

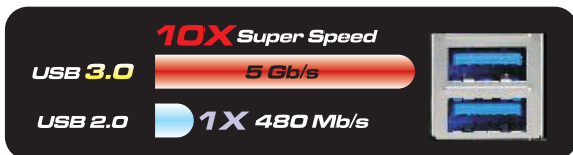
Intel® X58+ ICH10R Chipsets

ASRock®
www.asrock.com



Stunning Data Transfer Speed ASRock True 333

USB 3.0



USB 3.0, the world's best-known computer peripheral interface once again receives a major revamp to stay current with today's most demands for connectivity bandwidth. Delivering data transfer rates up to ten times faster than USB 2.0 with the optimized power efficiency, USB 3.0 promises a major leap forward in transfer speeds and capability.

SATA3



SATA3, the world's fastest interface, enables to maximum your hard disk drive performance. With the new SATA Revision 3.0 technology, ASRock ensures you the incredible data transfer rate up to 6Gb/s speed over SATA2.

eSATA3



eSATA3, the world's only eSATA3 device connectivity.

ASRock True 333 P.K. Other 333

	PCI-E	SATA3	USB 3.0
ASRock True 333 series	x16	PCI-E 2.0	PCI-E 2.0
Other 333 series	x8	PCI-E 1.0	PCI-E 2.0
	x8	PCI-E 2.0	PCI-E 1.0
	x16	PCI-E 1.0	PCI-E 1.0

ASRock True 333 series motherboards can run the PCI-E for VGA card, SATA3 and USB 3.0 at full speed together at the same time. However, other 333 series motherboards can only run one of them at full speed at one time.

X58 Extreme3

Intel® X58+ ICH10R Chipsets

ASRock®
www.asrock.com

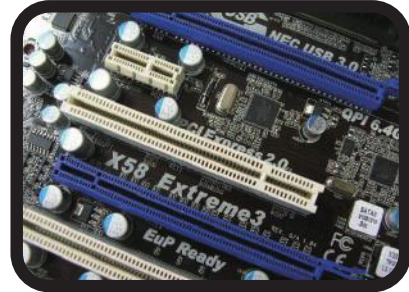
**Supports the Core i7
980X 6-Core CPU**



**Heatpipe with fan
design for CPU
power Mosfet**



**Supports ATI™ CrossFireX™
and Quad CrossFireX™
Supports NVIDIA® Quad SLI™
and SLI™**



Smart Switch Design



Clear CMOS Switch



Power Switch



Reset Switch



TPM support

Trusted Platform Module

Secure your working environment!
TPM provides enhanced data
protection, security via high-level
encryption/decryption, and
platform integrity.



Dr. Debug

Dr. Debug helps you
to diagnose the BIOS
POST status of your
system.



**Multi
SPEED
Fan Control**

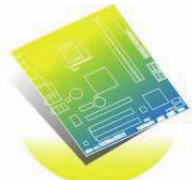


Set your ideal fan speed by tuning
the fan speed from level 1 to 10 in
BIOS or OC Tuner.

X58 Extreme3

Intel® X58+ ICH10R Chipsets

ASRock®
www.asrock.com



ErP/EuP Ready Motherboard



ErP/EuP Ready Power Supply



ErP/EuP System

What is ErP/EuP?

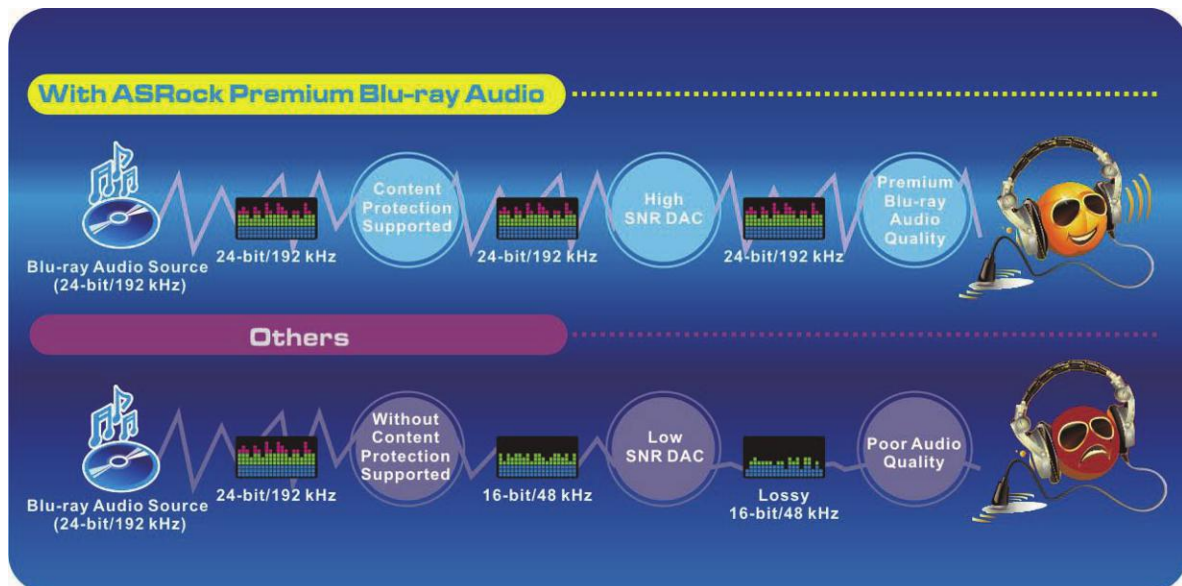
ErP/EuP, stands for Energy Using Product, was a provision regulated by European Union to define the power consumption for the completed system. With the great quantity and the popularity using of the electrical products nowadays and the continuously increasing of the electrical products categories in the following 20 to 30 years, European Union decided to establish an effective strategy to solve the energy consumption problem. That is, according to ErP/EuP, the total AC power of the completed system shall be under 1.00W in off mode condition.

Premium Blu-ray Audio



Premium Blu-ray Audio, an outstanding technology developed on ASRock motherboard, provides the excellent audio output of 24-bit/192 kHz with its respective Blu-ray DRM compatible driver/software. With Content Protection-Support and High SNR DAC, the Blu-ray entertainments can be played in a high quality of 24-bit/192kHz. In other words, if you are using a device without the Blu-ray Audio support, the audio quality will be downgraded to 16-bit/48kHz like a regular CD quality. To deliver the best possible sound solution for today's most demanding users, ASRock Premium Blu-ray Audio motherboard is the best choice for users who are particularly desired to enjoy the pure HD audio. ASRock users are able to take full advantages of our Blu-ray Audio motherboards. Choose ASRock, choose Pure HD audio!

Why ASRock?



* SNR: Signal-to-Noise Ratio.

Benefits of ASRock Premium Blu-ray Audio motherboards !

	ASRock Premium Blu-ray Audio motherboards	Other motherboards
Content Protection Support	Yes	No
SNR* DAC	High	Low
Audio Quality	Premium Blu-ray Audio Quality (24-bit / 192 kHz)	Downgrade to regular CD quality (16-bit / 48 kHz)

* SNR: Signal-to-Noise Ratio.

X58 Extreme3

Intel® X58+ ICH10R Chipsets

ASRock®
www.asrock.com



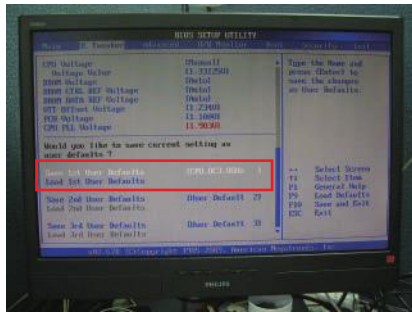
OC DNA

Save your OC settings as a profile and share with friends. Try OC DNA now!

OC DNA Instruction

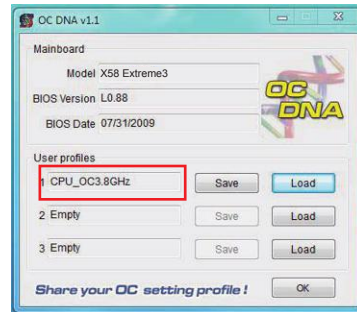
Step 1

Save your BIOS OC settings as User Default in BIOS OC Tweaker menu. (For example: we name this User Default setting as "CPU_OC3.8GHz")



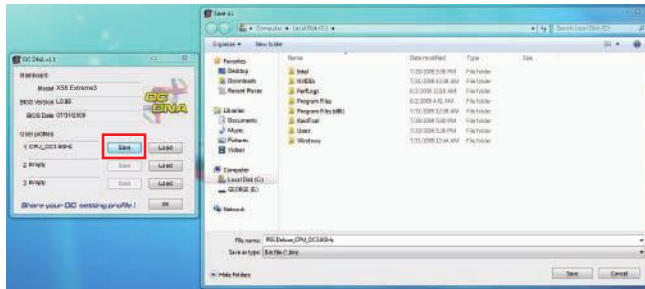
Step 2

Execute ASRock OC DNA under OS, you will find "CPU_OC3.8GHz" as User Profile 1.



Step 3

Press "Save" button to save the "CPU_OC3.8GHz" OC settings as a profile.



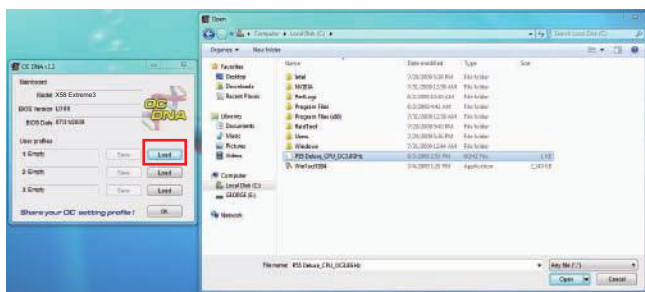
Step 4

Send the "CPU_OC3.8GHz" profile to other friends.



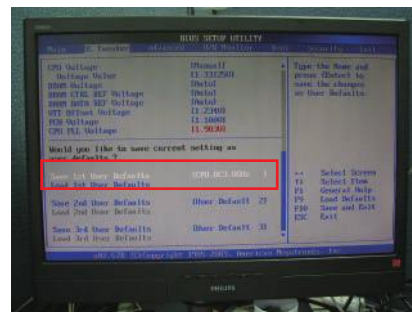
Step 5

When the friend receives your "CPU_OC3.8GHz" profile, he can press "Load" to load the "CPU_OC3.8GHz" profile in OC DNA.



Step 6

After that, the friend can enter into BIOS OC Tweaker menu to load the "CPU_OC3.8GHz" profile as his BIOS OC settings.



Now, you have successfully share your OC setting profile with your friends.

*The OC DNA works only when users use the same motherboard and BIOS version.

X58 Extreme3

Intel® X58+ ICH10R Chipsets

ASRock®
www.asrock.com

ASRock Instant Boot



ASRock Instant Boot is a new feature invented exclusively by ASRock. It can boot up system in an amazing speed, which is 10 times faster than traditional boot up. For home users or office PC users, ASRock Instant Boot can also guarantee a clean Windows OS, and consumed less power! For details: <http://www.asrock.com/feature/InstantBoot/index.asp>

- * This function is applicable ONLY to single user that does not secure ID and Password to their systems.
- * The boot up time depends on the hardware configuration.

10 Times Faster, Only 4 Secs to Boot Up to Windows!

ASRock YouTube

<http://tw.youtube.com/watch?v=BucljXZVxXo>



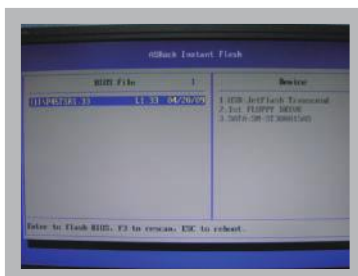
ASRock Instant Flash

ASRock Instant Flash is an exclusive and the most user-friendly BIOS flash utility developed by ASRock. It is embedded in Flash ROM which is used to update the system BIOS without having to enter operating systems like MS-DOS or Windows.



Features

Once executing ASRock Instant Flash, the utility will automatically detect all devices such as USB, hard disk or even floppy drive to find the exact BIOS for your system. Instead of giving you all BIOS in your devices, the Instant Flash just list BIOS versions that apply to your motherboard model only. For example, if you have many different BIOS of different motherboards saved in your devices, but you just need to flash your P45 motherboard, the Instant Flash will just list the P45 BIOS versions for you. This unique function allows you to easily select the suitable BIOS version instead of browsing through all data.



Instant Flash just list BIOS versions that apply to your motherboard model.

Simple!



Click and start Flashing!

Quick!

X58 Extreme3

Intel® X58+ ICH10R Chipsets

ASRock®
www.asrock.com



CyberLink



CyberLink Power2Go 6.1 LE OEM

Power2Go 6 lets you burn and backup videos, photos, music and data onto Blu-ray Discs and DVDs.

CyberLink MediaShow 4.1 SE OEM

Photo and video management software MediaShow edits videos and photos instantly, creates slideshow, and allows publishing directly to YouTube and Flickr.

CyberLink PowerDVD 8.0 DTS Trial

World-renowned PowerDVD 8 DTS delivers outstanding DVD movie playback quality on your PC.

CyberLink PowerDirector 8.0 Trial

PowerDirector - Video Editing software – edits high-definition videos including AVCHD, allows output to PSP iPod and Blu-ray Disc.

CyberLink PowerBackup 2.5 Trial

PowerBackup backups valuable data on your PC.

Creative Sound Blaster X-Fi MB Trial

The Sound Blaster X-Fi MB solution provides premium audio quality, effects and features for PC systems equipped with onboard audio.

For gamers, the EAX® ADVANCED HD 4.0, with its state-of-the-art Multi-Environment rendering and reverb modelling, delivers a much more realistic and immersive 3D gaming experience than your motherboard audio ever will.